



For Lease/Sale

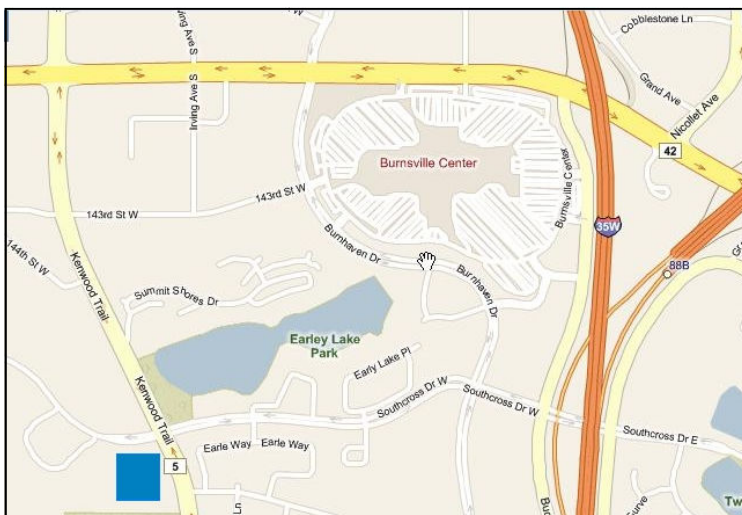
1501-1513 Southcross Dr. Burnsville, MN

Earley Lake Office Park



- ◆ 1513—shell ready to be finished 4,000 SF
- ◆ 1501 Lower Level unfinished 1,472 SF
- ◆ 1505 - fully completed unit with 2,944 SF

- ◆ Attractive Seller Financing Available!!
- ◆ Located SW of Burnsville Center with easy access to I-35 and Cty Rd 42.
- ◆ Each unit has 3 floors with various floor configurations avail. from 1,060-4,009 SF
- ◆ Rent starting at \$1,500/month
- ◆ Units can be built to suit, or move in now!
- ◆ Purchase 4,000—16,000 Square Feet



For more information, contact:

Roz Peterson
 952.469.9444
 Cell: 612.708.5281
 rozp@cerron.com



www.cerron.com

View our Virtual Tour at:

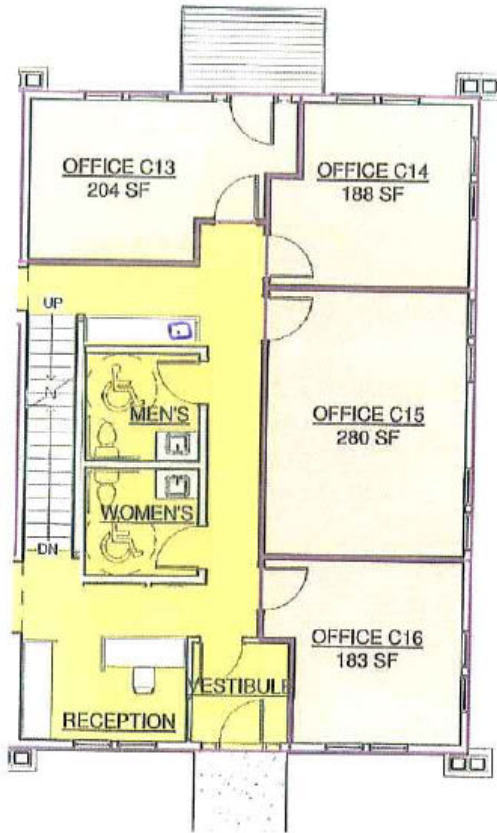
<http://www.tourfactory.com/529221>

Creating Property Solutions for you... with you

The information contained herein is deemed reliable but is not guaranteed. We have not verified its accuracy nor do we make any warranty or representation about it. You and your tax and legal advisors should conduct your own investigation of the property and transaction.

1505

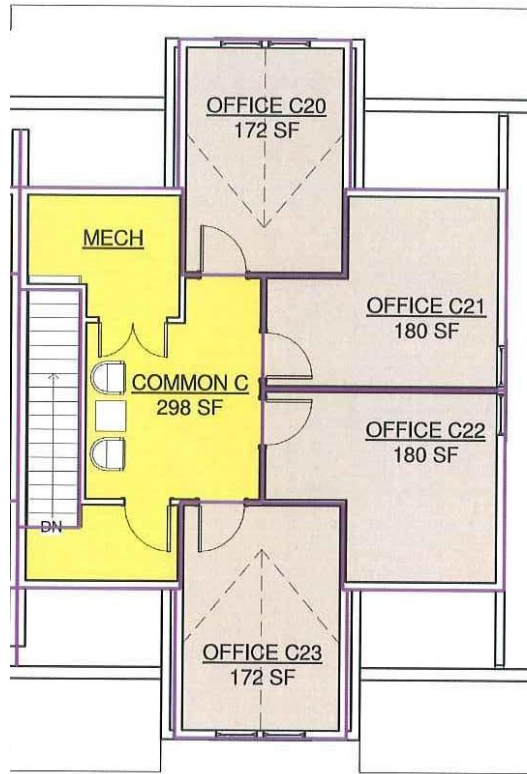
Main Level



1513 Southcross Drive

- *Three Levels in shell condition
- *Can be divided (1,472 SF main & lower level, 1,064 SF upper level)
- *Built to suit

Upper Level



1501 Southcross Drive

- *Lower Level Space
- *Co-tenant with Lillian's Wellness Center (Women's Cancer Resource)
- *1,472 SF shell build to suit

