



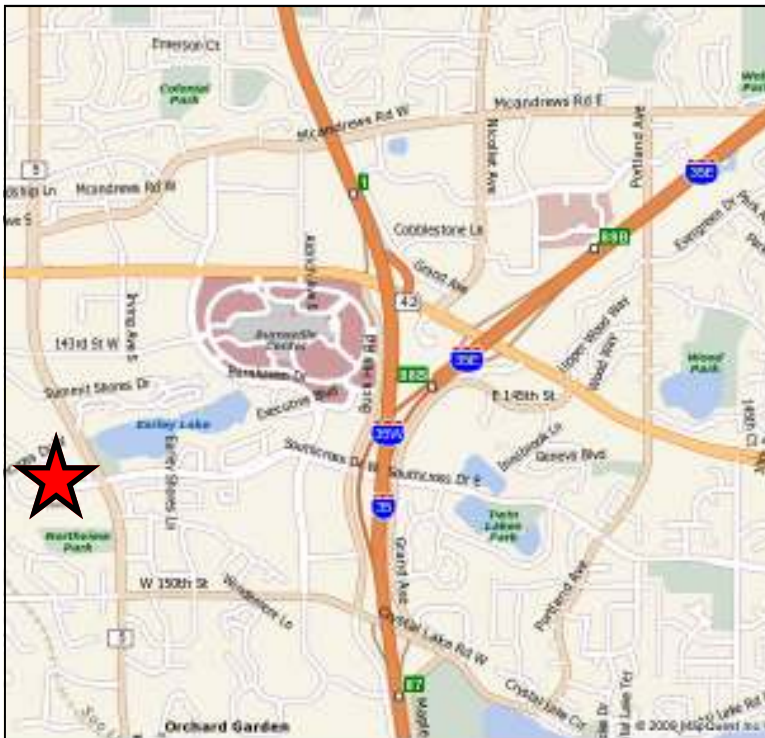
For Sale

1609 Southcross Drive W., Burnsville, MN 55337



Earley Lake Office Park Office Condo

- ◆ 4,016 SF on 3 Floors
- Main Level 1,472 SF
- Lower Level 1,472 SF
- Upper Level 1,059 SF
- ◆ Located on the SWQ of Southcross Drive and CR-5
- ◆ Zoned B-2 (Neighborhood Business)
- ◆ Near Burnsville Center
- ◆ Built in 2006
- ◆ Attractive Seller Financing available
- ◆ Shell ready



For more information, contact:

Roz Peterson

Main: 952.469.9444

Direct: 612.708.5281

Email: rozp@cerron.com

Visit our website to view this property in more detail or other properties Cerron has available at: www.cerron.com

Creating Property Solutions for you... with you

The information contained herein is deemed reliable but is not guaranteed. We have not verified its accuracy nor do we make any warranty or representation about it. You and your tax and legal advisors should conduct your own investigation of the property and transaction.



Data Sheet

1609 Southcross Drive W., Burnsville, MN 55337

Size	4,016 Total SF on 3 Floors Main Level: 1,472 SF Lower Level: 1,472 SF Upper Level: 1,059 SF
Zoned	B-2 Neighborhood Business
Dakota County PID#	02-22551-609-06
Year Built	2006
Building Status	Shell Condition—Ready for Build-out
Financing	Bank Owned—Seller Financing Available
Budgeted Build-out	\$160,000—\$225,000 (Grace Church—\$56/SF) \$120,000 (\$30/SF)
Appraised Value	\$290,000 (10/08)
Association Dues	\$250/month
Sale Price	\$225,000 (\$56.03/SF)

Creating Property Solutions for you... with you



Location

1609 Southcross Drive W., Burnsville, MN 55337



Creating Property Solutions for you... with you

The information contained herein is deemed reliable but is not guaranteed. We have not verified its accuracy nor do we make any warranty or representation about it. You and your tax and legal advisors should conduct your own investigation of the property and transaction.



Aerial Photo

1609 Southcross Drive W., Burnsville, MN 55337



Creating Property Solutions for you... with you

The information contained herein is deemed reliable but is not guaranteed. We have not verified its accuracy nor do we make any warranty or representation about it. You and your tax and legal advisors should conduct your own investigation of the property and transaction.



Interior Pictures

1609 Southcross Drive W., Burnsville, MN 55337



Creating Property Solutions for you... with you

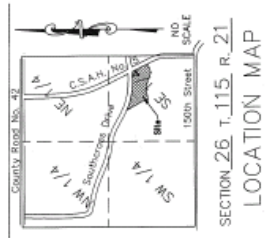
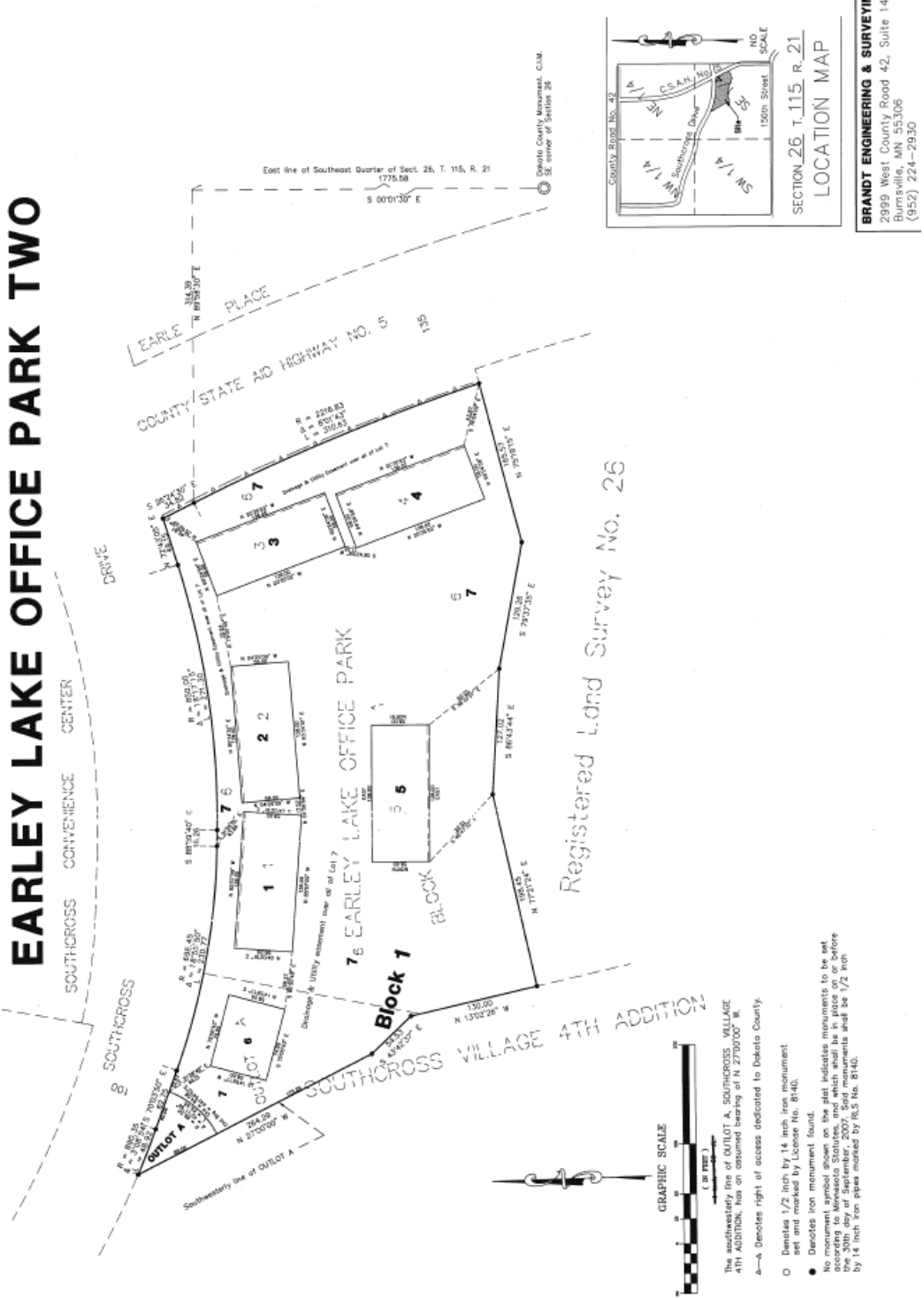
The information contained herein is deemed reliable but is not guaranteed. We have not verified its accuracy nor do we make any warranty or representation about it. You and your tax and legal advisors should conduct your own investigation of the property and transaction.



Site Plan

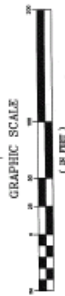
1609 Southcross Drive W., Burnsville, MN 55337

EARLEY LAKE OFFICE PARK TWO



BRANDT ENGINEERING & SURVEYING
 2999 West County Road 42, Suite 142
 Burnsville, MN 55306
 (952) 224-2930

Registered Land Survey No. 26



The southerly line of OUTLOT A, SOUTHCROSS VILLAGE 4TH ADDITION, has an assumed bearing of N 27°00'00" W. A—A denotes right of access dedicated to Dakota County.

- Denotes 1/2 inch by 14 inch iron monument set and marked by License No. 8140.
- Denotes iron monument found.
- No monument placed at Southcross Village 4th Addition on the 30th day of September, 2007. Said monuments shall be 1/2 inch by 14 inch iron pipes marked by RLS No. 8140.

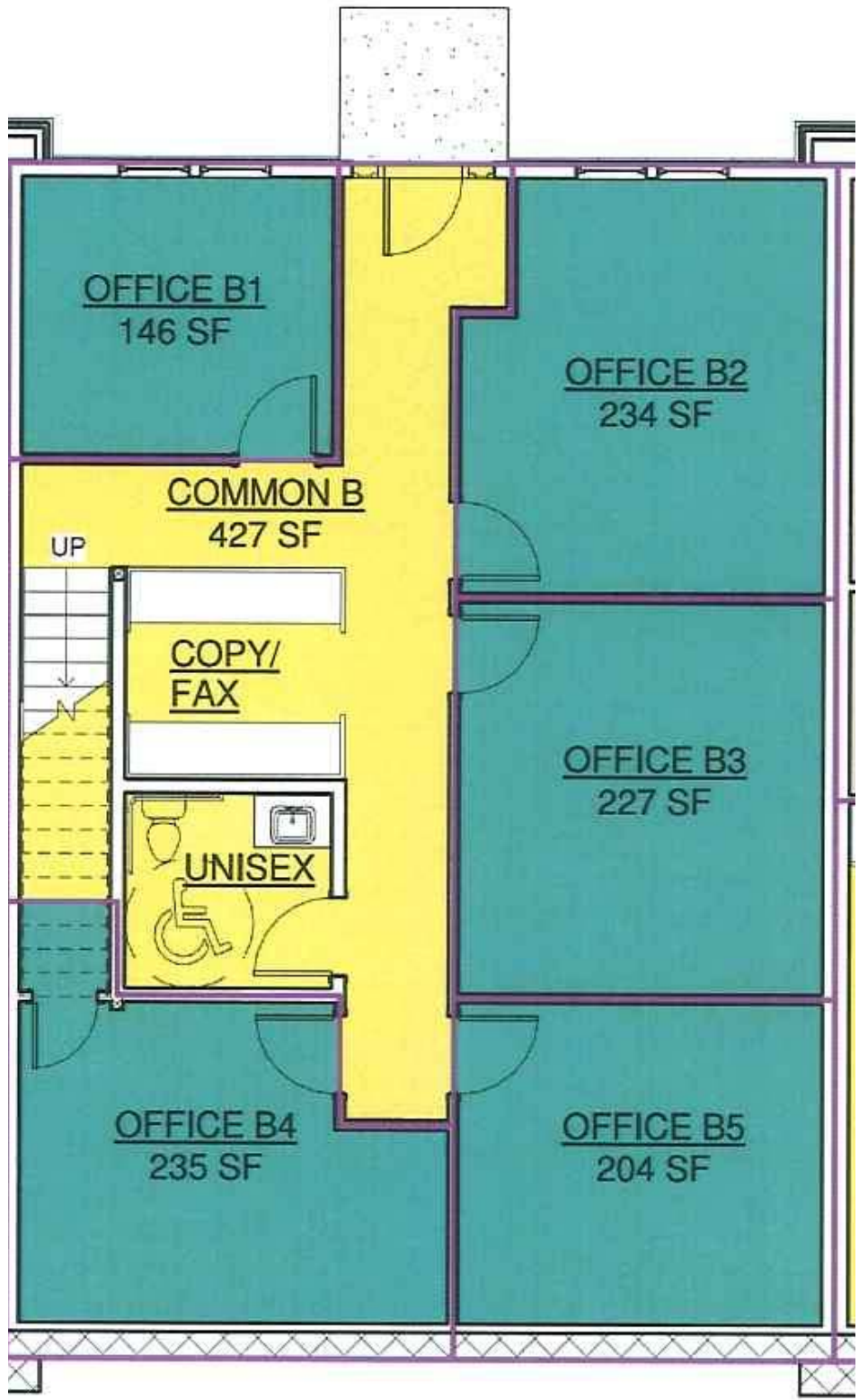
Creating Property Solutions for you... with you

The information contained herein is deemed reliable but is not guaranteed. We have not verified its accuracy nor do we make any warranty or representation about it. You and your tax and legal advisors should conduct your own investigation of the property and transaction.



Sample Lower Level Floor Plan

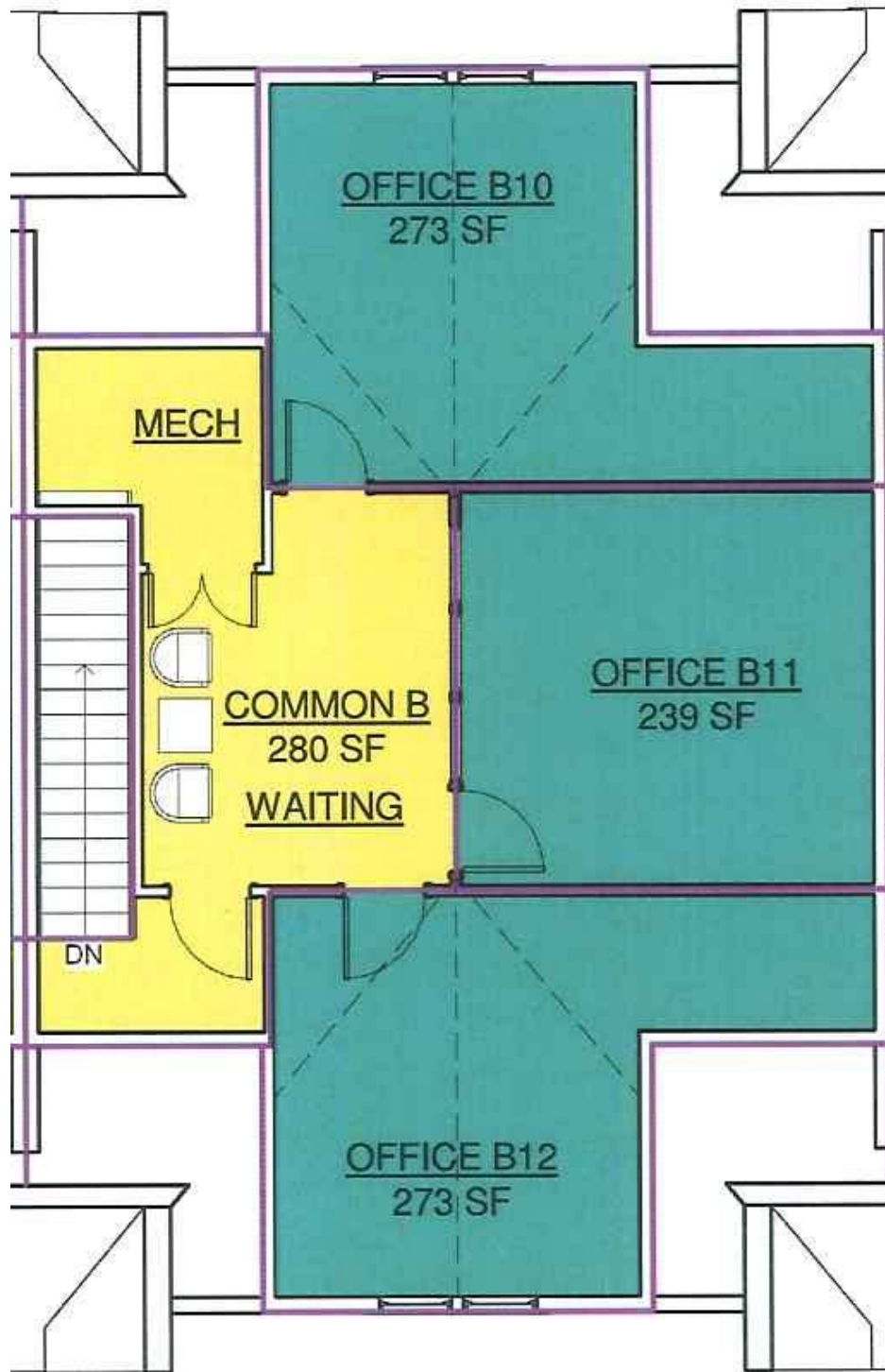
1609 Southcross Drive W., Burnsville, MN 55337





Sample Upper Level Floor Plan

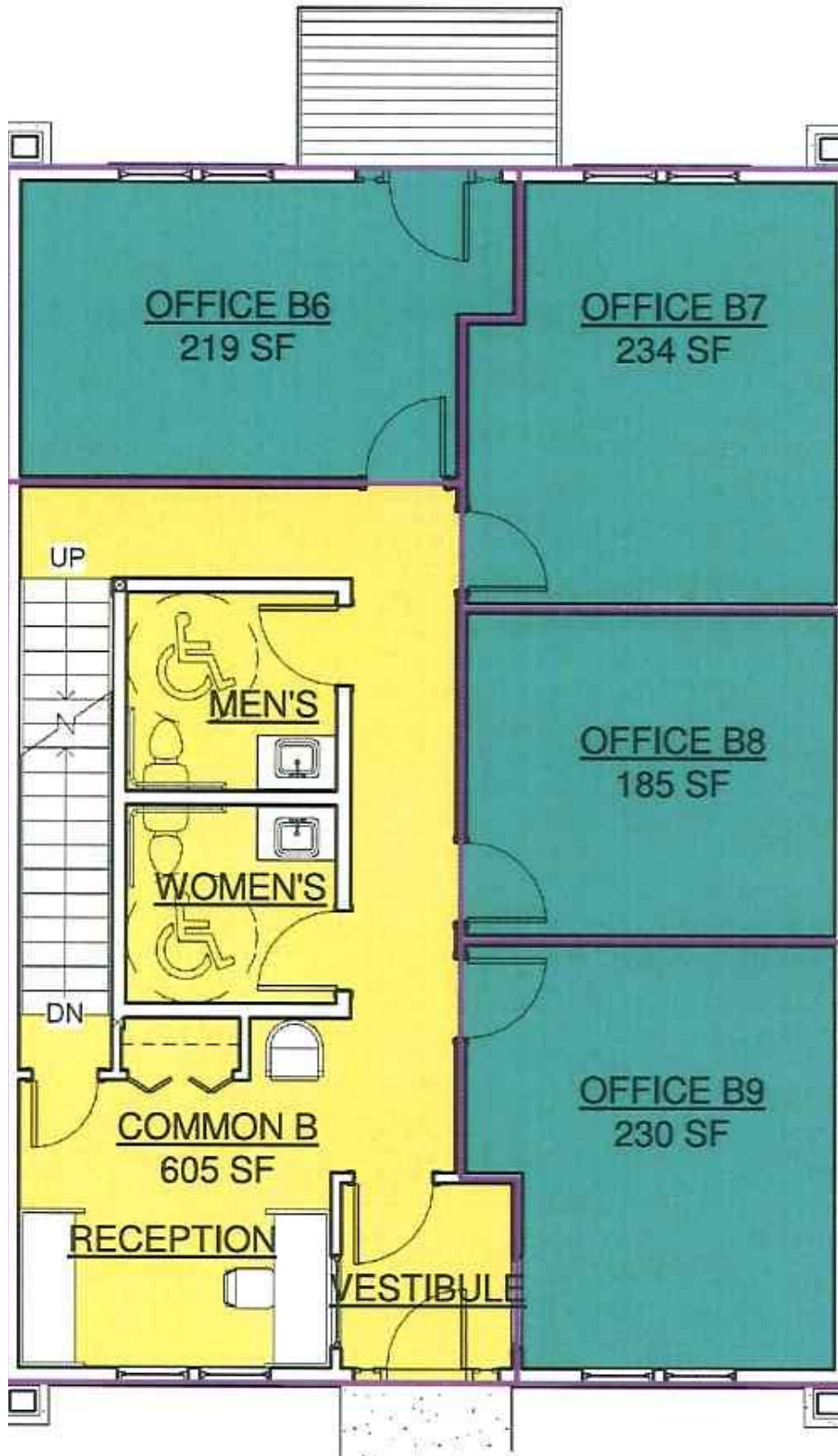
1609 Southcross Drive W., Burnsville, MN 55337





Sample Main Level Floor Plan

1609 Southcross Drive W., Burnsville, MN 55337





EARLEY LAKE OFFICE PARK CONDOS

1609 Southcross Drive W., Burnsville, MN 55337



**Premier Location just
seconds away from
Burnsville Center!**

**Shell Condition—ready
to custom finish to your
needs!**

Custom Finished to your needs:

- Flexible Custom Floor Plans
- Handicap Accessible
- Cultured Stone
- Fire Protection
- ADA Accessible
- Air Conditioning
- Open Floor Plans
- Forced Air Heating
- Hot Water Heat
- Sprinkler System
- Cedar Decks w/Aluminum



Creating Property Solutions for you... with you

The information contained herein is deemed reliable but is not guaranteed. We have not verified its accuracy nor do we make any warranty or representation about it. You and your tax and legal advisors should conduct your own investigation of the property and transaction.



Sample Mortgage Payment

1609 Southcross Drive W., Burnsville, MN 55337

Sample Financing:

	\$270,000	Sale Price
+	\$140,000	Build-out (~\$35/SF)
	<hr/>	
	\$410,000	Total
-	\$ 41,000	10% down
	<hr/>	
	\$369,000	
+	\$ 7,380	Closing Costs 2%
	<hr/>	
	\$376,380	Mortgage
		<i>10 year term</i>
		<i>20 year amortization</i>
		<i>6% interest</i>

\$2,696/month—Monthly Payments

\$250/month Association Dues

Creating Property Solutions for you... with you

The information contained herein is deemed reliable but is not guaranteed. We have not verified its accuracy nor do we make any warranty or representation about it. You and your tax and legal advisors should conduct your own investigation of the property and transaction.



Tax Info

1609 Southcross Drive W., Burnsville, MN 55337

PROPERTY ID NUMBER: 02-22551-609-06

FEE OWNER:

MINNWEST BANK METRO
1150 YANKEE DOODLE RD
EAGAN MN 55131

PROPERTY ADDRESS:

1609 SOUTHCROSS DR W
BURNSVILLE MN 55337

2009 ESTIMATED MARKET VALUE (PAYABLE 2010)

LAND: \$60,000
BUILDING: \$254,400
TOTAL: \$314,400

2009 TAXABLE/LIMITED MARKET VALUE (PAYABLE 2010)

LAND: \$60,000
BUILDING: \$254,400
TOTAL: \$314,400

2008 ESTIMATED MARKET VALUE (PAYABLE 2009)

TOTAL: \$314,400

2008 TAXABLE/LIMITED MARKET VALUE (PAYABLE 2009)

TOTAL: \$314,400

PAYABLE 2009 TAXES

NET TAX: \$9,755.16
SPECIAL ASSESSMENTS: \$0.00
TOTAL TAX & SA: \$9,755.16

LAST QUALIFIED SALE:

DATE:
AMOUNT: \$0

LOT SIZE

R/W ACREAGE: 0.56
TOTAL ACREAGE: 0.56

YEAR BUILT: 2006

SCHOOL DISTRICT: 191

WATERSHED DISTRICT: BLACK DOG

PAYABLE 2010 HOMESTEAD STATUS: NON HOMESTEAD

PAYABLE 2010 ASMT USAGE:

COMMERCIAL

Creating Property Solutions for you... with you

2009 BUILDING CHARACTERISTICS (PAYABLE 2010):

<u>TYPE</u>	OFC, CONDO
<u>YEAR BUILT</u>	2006
<u>ARCH/STYLE</u>	
<u>FOUNDATION SQ FT</u>	NOT APPL
<u>FINISHED SQ FT</u>	4016
<u>BEDROOMS</u>	0
<u>BATHS</u>	3
<u>FRAME</u>	D-WOOD
<u>GARAGE SQ FT</u>	0
<u>OTHER GARAGE</u>	
<u>MISC BLDG</u>	

PLAT NAME: EARLEY LAKE OFFICE PARK TWO
TAX DESCRIPTION: CIC #558 EARLEY LAKE OFFICE
PARK UNIT #1609 & INTEREST
ATTRIBUTABLE TO COMMON AREA
KNOWN AS LOT 7 BLK 1



Community Profile for

Burnsville, Minnesota

[Show Map](#)



Overview

Burnsville, although 98% developed, continues to have commercial and industrial land available for development. Utilities are already in place throughout the city with major highway arteries, rail, river barge and air passenger and freight services easily accessible. Mpls-St. Paul Intl Airport, two major railroad lines, the nation's second largest inland port on the Minnesota and Mississippi rivers.

Location

County:	Dakota
Region:	East Twin Cities Metro
Distance from Minneapolis:	14
Distance from nearest MSA*:	0 Miles from Minneapolis-St. Paul MSA
US Congressional District:	2
MN Legislative District(s):	37A38A40A
Web site:	www.burnsville.org
Last Updated:	7/7/2006

Population

Area	2005 Estimate	2004 Estimate	2000 Census	1990 Census
Community:	61,262	61,425	60,220	51,288
County:	391,558	383,076	355,904	275,189
Nearest MSA:	3,207,067	3,156,745	2,968,806	2,538,776
Minnesota:	5,205,091	5,145,106	4,919,479	4,375,099

Source: U.S. Census, State Demographer * Metropolitan Statistical Area

Major Employers

Employer	NAICS	Products/Services	Employee Count
Burnsville Public Schools-ISD #191	6111	Elementary & Secondary Schools	1,600
Fairview Ridges Hospital	6221	General Medical & Surgical Hospitals	1,400
Goodrich Sensor Systems	3341	Computer & Peripheral Equipment Manufacturing	1,150
Northern Hydraulics Inc	3332	Industrial Machinery Manufacturing	600
Pepsi-Cola Bottling Co	3121	Beverage Manufacturing	550
Yellow Freight System Inc	4884	Support Activities for Road Transportation	400
CUB Foods	4521	Department Stores	300
Frontier Communications of MN	5171	Wired Telecommunications Carriers	300
Genz-Ryan	238220	Plumbing, Heating, & Air-Conditioning Contractors	300
Asset Marketing Services Inc	4511	Sporting Goods, Hobby, & Musical Instrument Stores	275
City of Burnsville	9211	Executive, Legislative, & Other Gen. Govt. Support	268



Byerly's Co	4451	Grocery Stores	250
Ebenezer Ridges Care Center	6231	Nursing Care Facilities	250
Park Nicollet Medical Ctr	6211	Offices of Physicians	225
Apothecary Products	325412	Pharmaceutical Prep. Mfg.	200
View All Employers Listed			

Workforce

	<i>Dakota County</i>	<i>Metro Council (11) Econ Dev Region</i>
Total Employment	224,100	1,556,662
Available Workforce	232,232	1,614,952
Unemployment Rate	3.5%	3.6%

Source: DSED - Labor Market Information: LAIS Annual Average 2006

Employment By Industry

	<i>Dakota County</i>	<i>Metro Council (11) Econ Dev Region</i>
Natural Resources and Mining	932	3,582
Construction	11,405	71,719
Manufacturing	19,444	185,177
Trade, Transportation and Utilities	43,423	310,203
Information	8,604	40,489
Financial Activities	11,849	136,889
Professional and Business Services	18,085	252,344
Education and Health Services	17,488	213,365
Leisure and Hospitality	17,055	146,936
Other Services	7,391	54,948
Government	18,378	196,139

NA - No Data Available

Source: DSED - Labor Market Information: CEW Annual Data 2006

Occupations and Wages in Seven County Mpls-St Paul, MN

<i>Job Title</i>	<i>Wage/Hr</i>	<i>Job Title</i>	<i>Wage/Hr</i>
Architecture and Engineering Occupations	\$30.28	Healthcare Support Occupations	\$14.02
Arts, Design, Entertainment, Sports, and Media Occupations	\$21.93	Installation, Maintenance, and Repair Occupations	\$21.45
Building and Grounds Cleaning and Maintenance Occupations	\$11.75	Legal Occupations	\$38.40
Business and Financial Operations Occupations	\$26.80	Life, Physical, and Social Science Occupations	\$29.20
Community and Social Services Occupations	\$19.00	Management Occupations	\$46.66
Computer and Mathematical Occupations	\$34.07	Office and Administrative Support Occupations	\$16.20
Construction and Extraction Occupations	\$26.94	Personal Care and Service Occupations	\$11.17
Education, Training, and Library Occupations	\$20.22	Production Occupations	\$16.06
Farming, Fishing, and Forestry Occupations	\$11.07	Protective Service Occupations	\$16.42
Food Preparation and Serving Related Occupations	\$9.28	Sales and Related Occupations	\$14.01



[View All Occupations and Wages](#)

Source: DSSD - Labor Market Information - CES Second Quarter, 2007.

Utilities

Utility Type	Utility Name	Utility Phone	Contact	Contact Phone
Electricity	Dakota Electric Assn	(651) 463-6212	LaDonna Boyd	(651) 463-6232
Electricity	Minnesota Valley Electric Cooperative	(952) 492-2313	Ron Jabs	(952) 492-8244
Electricity	Xcel Energy	(800) 895-4999	Ken Stabler	(612) 330-5834
Natural Gas	Centerpoint Minnegasco	(800) 269-1114	Connie Hargest	(612) 372-5050
Wastewater	Metropolitan Council Environmental Svc	(612) 222-8423	Jeff Syme	(612) 229-2109
Water	Burnsville Public Works	(952) 895-4307	Kevin Sutter	(952) 895-4552

Water Information

Water Source:	Wells
Storage Capacity:	19,100,000 gal.
Pumping Capacity:	19,500 gal./minute
Average Demand:	7,300,000 gal./day
Peak Demand:	22,400,000 gal./day
Total Water Hardness:	17 ppm
Industrial Water Rate:	Base chg. \$24.4/10,000 gal./qtr.; \$1.94/1,000 gal.

Wastewater Information

Treatment Type:	Mechanical Plant
Capacity of Plant:	34,000,000 gal./day
Average Demand:	25,000,000 gal./day
Peak Demand:	85,000,000 gal./day
Usage Charge:	Base chg. \$34.10/10,000 gal./qtr.; \$2.41/1,000 gal

Communications

Telephone Information

Local Telephone Company:	Frontier Communications of MN & Qwest
Telephone Number:	952-435-1504
Contact:	QWEST COMMUNICATIONS
Telephone Number:	Qwest (800) 244-1111
Digital Central Switch:	Yes
Equal Access Market:	Yes
Extended Area Service:	Yes
Custom Calling Features:	Yes
Customized Local Area Services:	Yes
Current Technologies:	DSL, ISDN

Internet Service

Local Public Internet Access Site:	Yes
Multiple Internet Service Providers:	Yes
Speed of Service:	Broadband
DEED Certification as E-Commerce Ready:	Yes

Cable TV Information



Local Company:
Telephone:

Media One
(612) 483-9999

Newspapers Information

<i>Newspaper Name</i>	<i>Telephone</i>	<i>Frequency</i>
<u>Burnsville Sun Current</u>	(952) 806-0072	Weekly
<u>Burnsville ThisWeek</u>	(952) 894-1111	Weekly
<u>Minneapolis Star Tribune</u>	(612) 673-4000	Daily
<u>St Paul Pioneer Press</u>	(651) 222-5011	Daily
<u>Dakota County Tribune</u>	(952) 894 - 1111	Weekly

Additional Telecommunication Providers

<i>Telecommunication Type</i>	<i>Provider Name</i>	<i>Phone</i>
Other	<u>Qwest</u>	(952) 434-4490

Commercial Transportation & Shipping

Highway Information

<i>Interstate</i>	<i>Miles From Community</i>	<i>Load Limit in Tons</i>	<i>Seasonal Limit In Tons</i>
I-35E	Within	9	
I-35W	Within	9	

<i>Four Lane</i>	<i>Miles From Community</i>	<i>Load Limit in Tons</i>	<i>Seasonal Limit In Tons</i>
CO-42	Within	9	
CO-77	Within	9	
MN-13	Within	9	

<i>Other</i>	<i>Miles From Community</i>	<i>Load Limit in Tons</i>	<i>Seasonal Limit In Tons</i>
CO-32	0	9	
CO-38	0	9	
County Road 11	0		
County Road 5	0		

Truck Information

Truck Lines: 24

Truck Terminals: 3

Navigable Water Information

<i>Water Name</i>	<i>Depth</i>

Rail Information

Inter-Modal Facility: No

Inter-Modal Facility Distance:

<i>Rail Line</i>	<i>Frequency</i>	<i>Reciprocal Switching</i>	<i>Distance to Main Line</i>	<i>Passenger Service</i>
Chicago/Northwestern	Daily	Yes	5	No
Minneapolis Northfield	Daily	Yes	5	No



Air Service Information

	<i>International</i>	<i>Local Regional</i>
<i>Name</i>	Mpls./St. Paul Intl. Airport	Airlake Airport
<i>Location</i>	Bloomington	Lakeville
<i>Miles to</i>	15	6
<i>Longest Runway Length</i>	10,000 Feet	4,100 Feet
<i>Surface Type</i>	Paved	Paved
<i>Lighted</i>	Yes	Yes
<i>Customs</i>	Yes	No
<i>Service Type</i>	Charter, Commercial, Freight, Jet	Charter, Jet
<i>Navigational Aids</i>	BEACON, DME, ILS, VOR/DME	BEACON, ILS, VOR/DME
<i>Weather Info Systems</i>	AWOSA/MNWAS, SAWRS	AWOSA/MNWAS, AWOSIII
<i>Major Airlines</i>	American, Continental, Delta, Northwest, TWA, United Airlines, US Air	

Daily Flights To MSP-Minneapolis-St. Paul Intl.:

Additional Commercial Transportation Providers

<i>Transportation Type</i>	<i>Provider Name</i>	<i>Phone</i>
----------------------------	----------------------	--------------

Housing & Commercial Activity

Housing Information

Single Family Units:	25,284	Percentage Owner Occupied:	68
Multiple Family Units:	8,199	Median Sales Price:	\$247,675.00
Mobile Homes:	776	Median Assessed Value:	\$200,900
Number of Units Built Since Last Census:		Median Rent:	\$779
Number of Residential Building Permits for 2005:	53	Vacancy Rate:	2
Value of Residential Building Permits for 2005:	\$14,665,831		

Source: US Census, 2000

Commercial Activity Information

Number of Commercial Building Permits for 2005:	36
Value of Commercial Building Permits for 2005:	\$81,946,781
Number of Public Building Permits for 2004:	23
Value of Public Building Permits for 2004:	\$22,559,000

Retail Sales Information

Year	Community Sales	County Sales
2005	\$1,420,976,293	\$6,636,695,083
2004	\$1,385,348,398	\$6,203,335,056
2003	\$1,363,306,635	\$5,781,056,739

Source: MN Dept. of Revenue



Business & Community Services

Financial Institutions Information

<i>Name</i>	<i>Phone</i>	<i>Total Assets</i>	<i>Capital as % of Assets</i>
<u>Wells Fargo</u>	(612)667-9378	\$15,453,887,000	7%
<u>FIRSTAR Bank</u>	(612) 890-8500	\$50,000,000	---
<u>M&I Marshall and Isley Bank</u>	(612)798-3466	\$33,268,021	---

[View All Financial Institutions](#)

Lodging & Meeting Facilities Information

<i>Facility</i>	<i>Number of Facilities Available</i>	<i>Facility Size</i>	<i>Teleconferencing Available</i>	<i>Teleconferencing Available to Public</i>
Hotel	6	808 rooms	No	No
Motel	2	165 rooms	No	No
Conference Center	0		No	No

Additional Lodging & Meeting Facilities

<i>Facility Type</i>	<i>Facility Name</i>	<i>Phone</i>
----------------------	----------------------	--------------

Local Medical Facilities Information

<i>Facility Type</i>	<i>Nbr of Facilities</i>	<i>Total Nbr of Beds</i>	<i>Telemedicine Available</i>
Clinic	3		No
Dentist	25		No
Doctor	32		No
Hospital	1	500	Yes
Nursing Home	2	700	No

Name of Nearest Hospital (if none in community):

Miles to Nearest Hospital:

Additional Local Medical Facilities

<i>Facility Type</i>	<i>Facility Name</i>	<i>Phone</i>	<i>Telemedicine Available</i>
----------------------	----------------------	--------------	-------------------------------

Local Transit Information

<i>Service</i>	<i>Available</i>	<i>Service</i>	<i>Available</i>
Inter-Community Bus	Yes	Taxi/Cab	Yes
Intra-Community Bus	Yes	Disabled Transportation	Yes



www.mnpro.com

Local Transit Providers

<i>Transit Type</i>	<i>Name</i>	<i>Phone</i>
Disabled Transportation	DARTS	
Inter-City Bus	<u>Greyhound Bus</u>	
Inter-City Bus	Jefferson	
Inter-City Bus	<u>Metro Transit</u>	612-349-74127
Inter-City Bus	<u>Minnesota Valley Transit Auth</u>	

Library Information

<i>Name</i>	<i>Phone</i>	<i>Internet Access</i>
Burnhaven Library		Yes
Metropolitan Regional Library		No

Worship Information

<i>Worship Type</i>	<i>Worship Name</i>	<i>Phone</i>	<i>Membership</i>
---------------------	---------------------	--------------	-------------------

Recreation Information

Facilities

Golf, swimming, boating, bicycling/walking paths, downhill skiing and ice skating, regional mall, banquet facilities, indoor skate parks, indoor go-carts and lodging options.

Festival/Arts

Fire Muster Celebration, Arts Society, Community Theatre, Orchestras and Dance Company.

Service Organizations

Chamber of Commerce, Jaycees, Rotary (2), Optimist Club, Knights of Columbus, Lions.

Education

Post-Secondary Information

<i>Nearest Technical College & Specialty</i>	<i>Location</i>	<i>Miles To</i>
<u>Dakota County Technical College</u>	Rosemount, Apple Valley, Eagan	12

At DCTC, you'll find examples where our partnerships with local, state and national businesses benefit our students. Thanks to the work of our program advisory committees, we maintain active partnerships with more than 500 businesses and industries to ensure that students are receiving the skills employers are seeking, using the latest technology possible. Our instructors don't just know this stuff, they live it. Instructors at DCTC have worked extensively in their professions and remain active in the industry. They bring their business and industry experience into their classrooms, shops, labs and studios. And our instructors do more than teach - they advise and mentor students. They make themselves available to students not just for help in coursework, but for help in achieving results, whether that's finding a new job or improving current one. Year after year, we place more than 95% of our graduates in their field within six months of graduation. And, as always, we offer lifetime placement assistance to graduates. 10/05

<i>Nearest Community College & Specialty</i>	<i>Location</i>	<i>Miles To</i>
<u>Normandale Community College</u>	Bloomington	12

As an urban community college serving primarily the southwest metropolitan region of the Twin Cities, Normandale prepares



students for full participation in our diverse communities, creates pathways to other college programs, and builds community connections. We are committed to quality teaching, accessible programs, and supportive services which respond to the changing needs of our students; rigorous associate degree-level liberal arts and technical curricula which meet or exceed transfer and workplace standards; developmental educational opportunities which prepare students for full participation in the curriculum; educational experiences which assist students to understand and celebrate their local, national, international, and multicultural environments; initiatives and alliances with community organizations, employers, and other educational institutions; and continuing education and customized training opportunities which foster lifelong learning. 7/06

<i>Nearest Public College/University & Specialty</i>	<i>Location</i>	<i>Miles To</i>
<u>University of Minnesota - Twin Cities metro</u>	Minneapolis, Saint Paul	25

The University of Minnesota is one of the most comprehensive public universities in the United States and ranks among the most prestigious. It is both the state land-grant university, with a strong tradition of education and public service, and the state's primary research university, with faculty of national and international reputation.

<i>Nearest Private College/University & Specialty</i>	<i>Location</i>	<i>Miles To</i>
		15

Telecommunications Use Available at Area Post-Secondary Institutions: Yes

Local K-12 Information

<i>School Type</i>	<i>Nbr of Schools</i>	<i>Enrollment</i>	<i>Grades</i>	<i>Pupil/Teacher Ratio</i>
Elementary	10	6,417	K-6	27:1
Middle School				
Junior High	3	2,611	7-9	19:1
Senior High	2	2,390	10-12	23:1
Private/Parochial				

School District:	191, 194 & 196
Telecommunications Use Available at Local K-12:	Yes
High School Graduates Attending Post-Secondary:	91%
State Wide Average:	64%

Education Institutions

<i>Education Type</i>	<i>Name</i>	<i>Phone</i>
-----------------------	-------------	--------------

Government



Structure Information

Organization:	Council Manager
Budget:	\$28,375,566
Community Bond Rating:	Moody's - - Aa1
Comprehensive Land Use Plan:	Yes
Locally Controlled Loan Program:	Yes
Recycling:	Yes
Fire Insurance Rating:	4
Industrial Plans Approved By:	City Council, Design Review Board, Planning Commission

Public Protection Services

<i>Service Type</i>	<i>Regular</i>	<i>Part-Time</i>	<i>Volunteer</i>	<i>Seasonal</i>
Fire	33	---	---	---
Police	82	---	---	---
Sheriff	138	21	---	---
EMT	12	---	---	---

Property Taxes - Payable 2006

Property Tax Information

State Tax Rate
Municipal Tax Rate
County Tax Rate
School Tax Rate
Misc. Tax Rate
Total Tax Rate

Assessed Market Value Information

Commercial	\$1,080,936,400
Residential	\$3,734,048,460
Other	\$916,937,440
138.99% Total	\$5,731,922,300

Minnesota commercial real estate taxes are based upon market value of taxable property as set by the local assessor. To calculate the tax for the current year, first compute the tax capacity by multiplying all property value up to \$150,000 times .015, plus any value over \$150,000 times .02. Example: net tax capacity on a \$200,000 business property: (\$150,000 X .015) + (\$50,000 X .02) = \$2,250 + \$1,000 = \$3,250. Tax capacity times the tax rate equals taxes owed. Commercial and industrial property must also pay a state property tax, which is equal to the tax capacity times the State Tax Rate.

In some localities where voters have approved referendums, an additional referendum tax must be added, calculated by multiplying the referendum tax rate times the total market value of the commercial property.

Please note: Specific property tax classifications and computations can be more complex and result in different tax amounts. This simplified explanation applies in the most general situations and will allow a business to roughly estimate its potential property tax burden. The county assessor or auditor may be able to answer questions about specific properties and uses.

Economic Development Services

Economic Development Authority: Yes
Housing Redevelopment Authority: No
County Development Corporation: No
Chamber of Commerce: Yes
Port Authority: No

Incentives

Burnsville is fully committed to the creation of employment opportunities and the continued retention of jobs. Tax Increment Financing and Tax Abatement are available to assist manufacturing businesses, as well as small commercial or industrial businesses. Various small industrial sites are also available.

Contact Information

Jenni Faulkner
Community Development Director
City of Burnsville
100 Civic Center Parkway
Burnsville, MN 55337-3817
(952) 895-4467

Daron Van Heldon
President
Burnsville Chamber of Commerce
101 W Burnsville Pkwy #150
Burnsville, MN 55337
(952) 898-5641

Skip Nienhaus
Economic Development Coordinator
City of Burnsville
100 Civic Center Parkway
Burnsville, MN 55337-3817
(952) 895-4454

Economic Development Organizations

<i>Type</i>	<i>Name</i>	<i>Phone</i>	<i>Fax</i>
-------------	-------------	--------------	------------

Disaster & Emergency Services

<i>Name</i>	<i>Phone Number(s)</i>
<u>Public Safety emergency resources</u>	1-800-422-0798 or metro 651-649-5451
<u>Federal Emergency Management Agency</u>	Region V FEMA 312-408-5500
<u>Small Business Administration Disaster Resources</u>	Disaster Area Offices 404-347-3771
<u>Risk Larkin</u>	952-895-4570



About CERRON

We are a full service, integrated commercial real estate company serving the needs of individual, corporate, and institutional owners and investors. We offer a broad range of specialized capabilities including:

- Corporate Advisory Services
- Acquisition, Disposition, and Investment Services
- Brokerage, Leasing and Consulting
- Tenant Representation
- Financial Services and Analysis

We are located in the south metro area of the Twin Cities. Although we focus primarily south of the Minnesota River, we have and will continue to work wherever our clients need assistance. We have experience in all major types of commercial real estate, with particular emphasis on office, warehouse, industrial, retail and healthcare.

CERRON clients can always expect ethical, professional services. Our expertise is broad based, which allows us to offer experience and insight above the ordinary and in a cost effective and timely manner. Once we establish your needs, we create a strategic plan to help you achieve your real estate goals.

Our close relationship with APPRO Development allows us to provide our clients with a “single source” for real estate from the beginning to the end of a development project. When you hire CERRON, you get a team of very qualified professionals with experience in solving many types of real estate problems. Our team members work closely together to promote the achievement of our clients objectives and service responsibilities.

CERRON will continue to encourage a professional and ethical team environment that is focused on helping clients achieve all their real estate goals. Together we plan on helping our clients build many successful projects for many years to come.

Creating Property Solutions for you... with you