



For Lease

17305 Cedar Avenue Lakeville, MN 55044



Cedar Avenue Professional Building



- ◆ 25,000 sq. ft. building
- ◆ 2,569 Square Feet Available
- ◆ Newer Class A Building
- ◆ Parking ratio—5/1,000
- ◆ Convenient access via Cedar Avenue South (Hwy 23) and Glacier Way
- ◆ Digital high efficiency HVAC system
- ◆ Card-key entry security system

For more information, contact:

Roz Peterson

612.708.5281

rozp@cerron.com

Visit our website to view properties

Cerron has available at:

www.cerron.com

Creating Property Solutions For You... With You

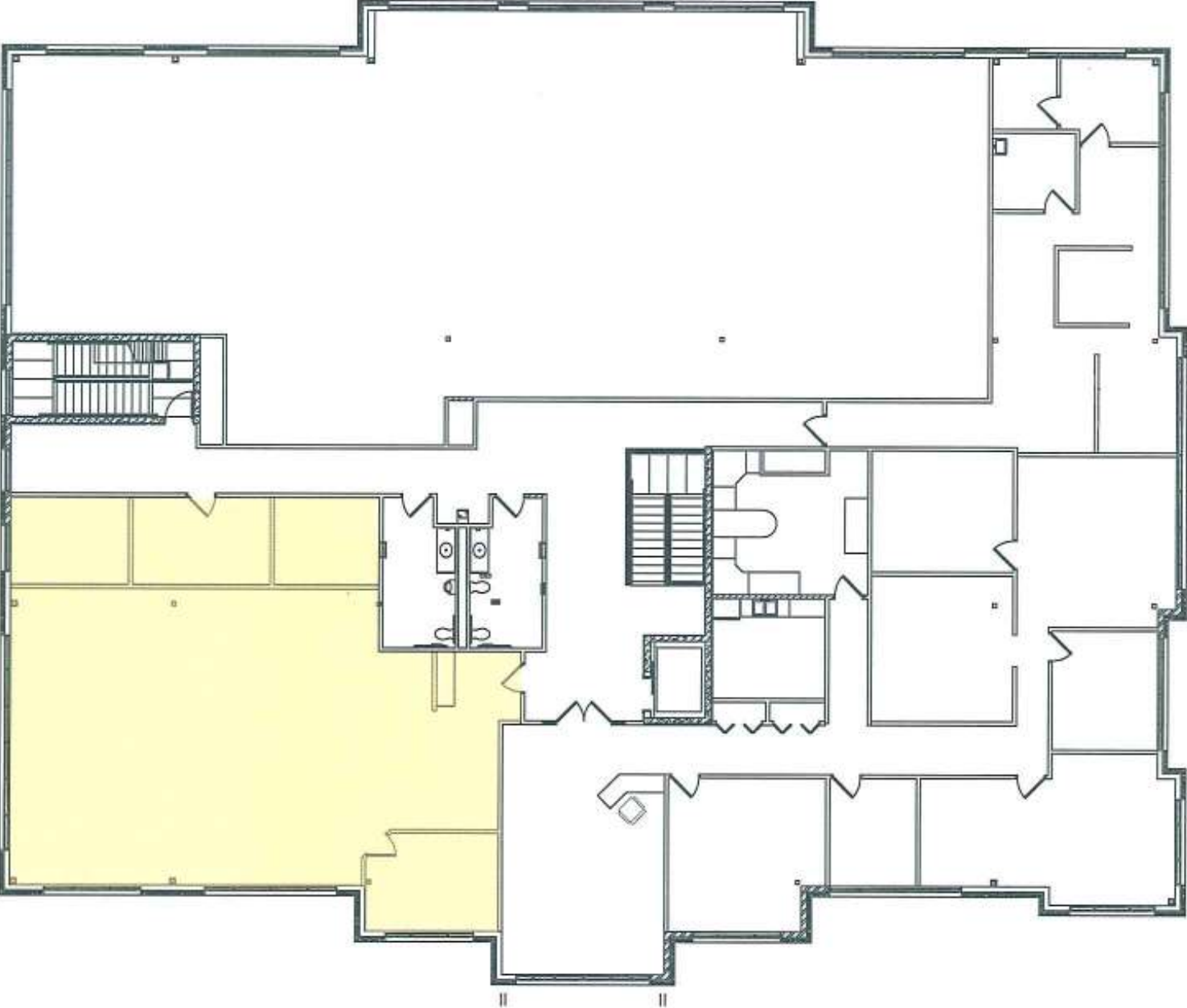
The information contained herein is deemed reliable but is not guaranteed. We have not verified its accuracy nor do we make any warranty or representation about it. You and your tax and legal advisors should conduct your own investigation of the property and transaction.



Floor Plan

17305 Cedar Avenue Lakeville, MN 55044

2nd Floor—2,569 Square Feet Available



Creating Property Solutions For You... With You

The information contained herein is deemed reliable but is not guaranteed. We have not verified its accuracy nor do we make any warranty or representation about it. You and your tax and legal advisors should conduct your own investigation of the property and transaction.