



For Sale or Lease

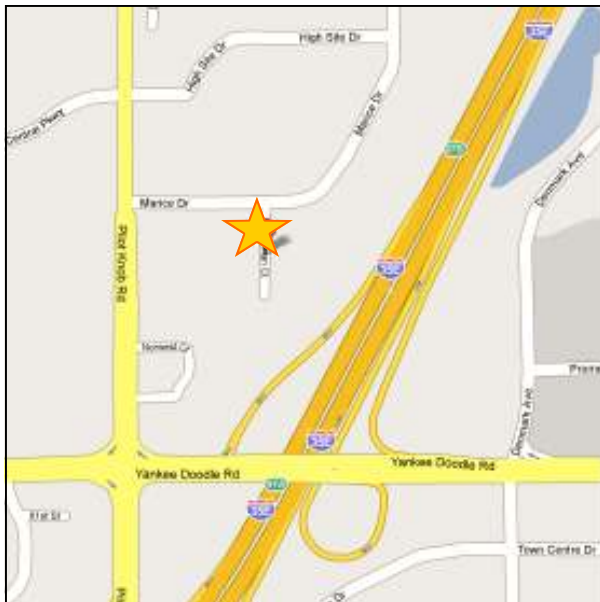
3352 Sherman Court, Suites 201 & 202, Eagan, MN 55121



2nd Floor Office Condo

- ◆ **3,800 SF**
- ◆ **37,500 cars/day on Yankee Doodle Rd.**
- ◆ **Perfect for Prof. office use**
- ◆ **Great Visibility**
- ◆ **Nice Finishes throughout**
- ◆ **Built in 2005**
- ◆ **Easy Freeway Access**

Easy access to I-35E!!



For more information, contact:

Bruce Rydeen

952.469.9444

brucer@cerron.com

Roz Peterson

612-708-5281

rozp@cerron.com

Visit our website to view this property in more detail or other properties Cerron has available at: www.cerron.com

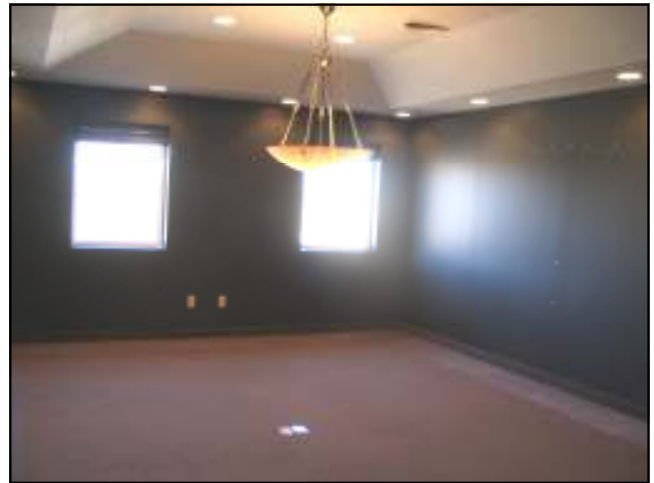
Creating Property Solutions for you... with you

The information contained herein is deemed reliable but is not guaranteed. We have not verified its accuracy nor do we make any warranty or representation about it. You and your tax and legal advisors should conduct your own investigation of the property and transaction.



Interior Photos

3352 Sherman Court, Suites 201 & 202, Eagan, MN 55121



Creating Property Solutions for you... with you

The information contained herein is deemed reliable but is not guaranteed. We have not verified its accuracy nor do we make any warranty or representation about it. You and your tax and legal advisors should conduct your own investigation of the property and transaction.