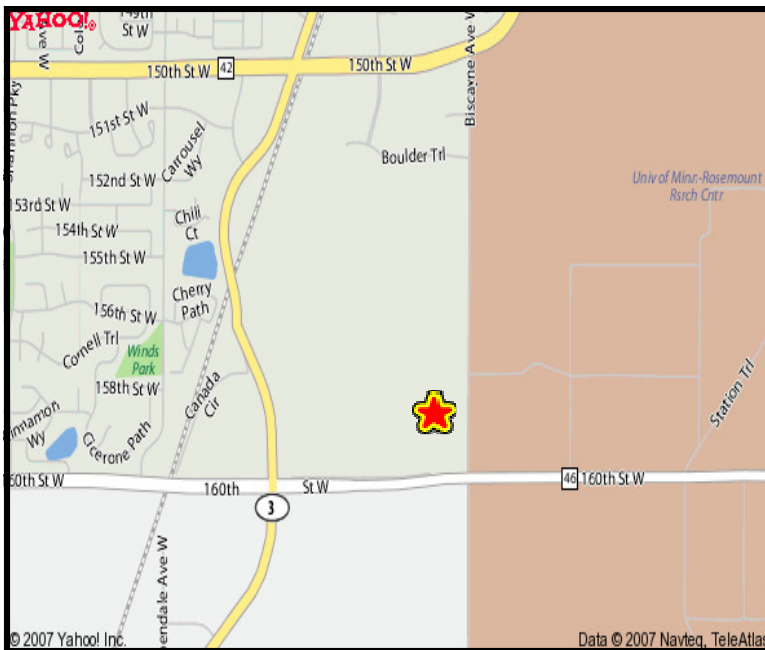
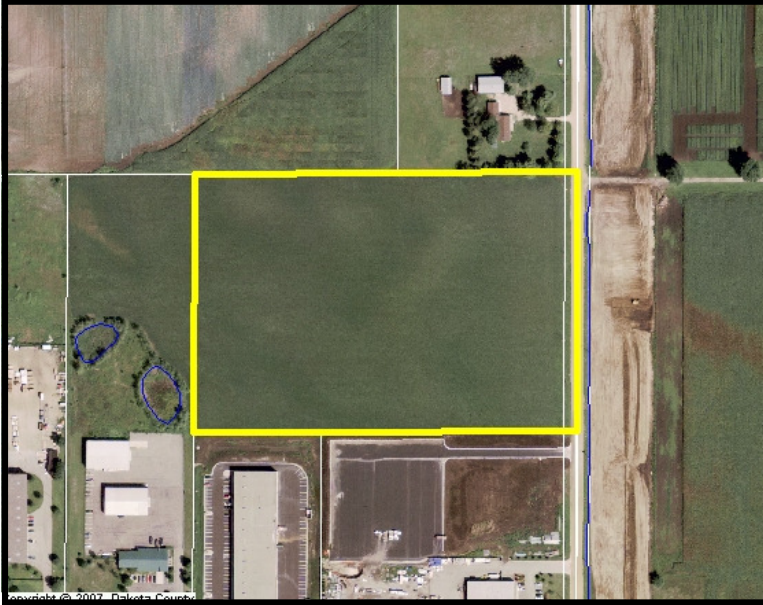




For Sale

County Road 46 and Biscayne Ave, Rosemount, MN



Rosemount Business Park

- ◆ 15 acres of Business Park Land
- ◆ Zoned for anything from office buildings to light manufacturing
- ◆ Located off CR 46 just East of Highway 3 in Rosemount
- ◆ Easy access to Highway 3 and Highway 52
- ◆ Rapidly growing area

For more information, contact:

Bruce Rydeen
952.469.9444
brucer@cerron.com

Visit our website to view this property in more detail or other properties Cerron has available at: www.cerron.com

Creating Property Solutions for you... with you

The information contained herein is deemed reliable but is not guaranteed. We have not verified its accuracy nor do we make any warranty or representation about it. You and your tax and legal advisors should conduct your own investigation of the property and transaction.